



# Community-based Conservation of Tonkin Snub-nosed Monkeys in the Karst of Du Gia Nature Reserve



**Frank Momberg**

Fauna & Flora International Vietnam Programme, Hanoi, Vietnam; e-mail: [fmomberg@ffi.org.vn](mailto:fmomberg@ffi.org.vn)



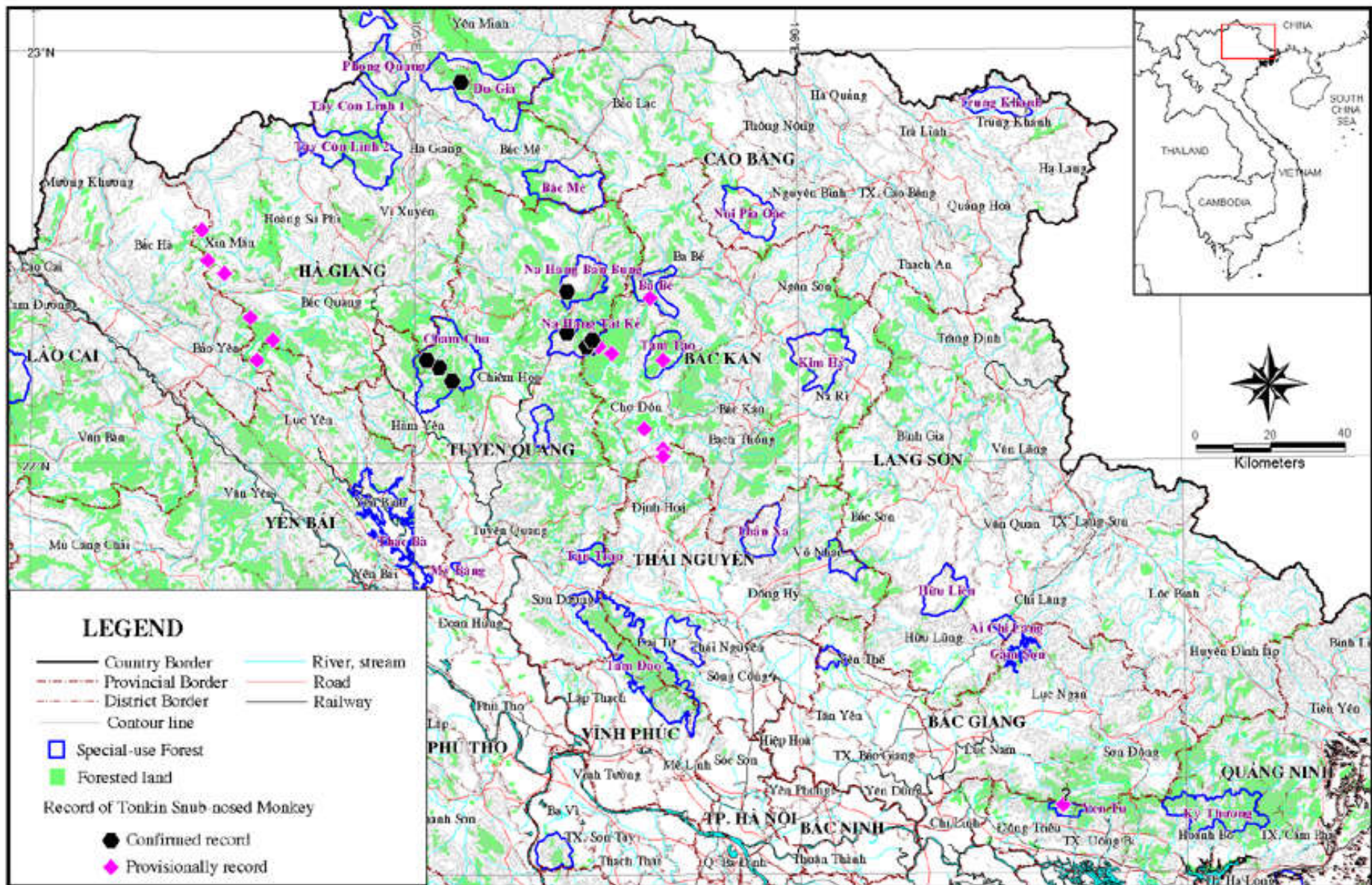


## Tonkin snub-nosed monkey (*Rhinopithecus avunculus*)

- Endemic to Vietnam
- Historically restricted to the north and northeastern provinces of Vietnam
- Globally Threatened; Critically Endangered (Hilton Taylor, 2000)
- One of the 25 most endangered primates in the world (Conservation International, 2002)
- 103-250 individuals fragmented in five sub-population (karst blocks)



**Map 3: Distribution of Tonkin Snub-nosed Monkey (*Rhinopithecus avunculus*) in Vietnam (Updated Map, 2002)**





# Threats

- **Hunting & Wildlife trade**

For food

To make traditional medicine

For sale locally, although this trade is driven by international forces



- **Habitat loss and disturbance leading to fragmentation**

Agricultural encroachment

Illegal timber extraction

# Conservation approach

Project preparation & assessments:

- Population census of Tonkin Snub-nosed Monkey,
- Threat analysis (wildlife trade survey, assessment of illegal logging),
- Socio-economic assessment,
- Baseline attitude survey for conservation awareness,
- Intensive species-focused conservation awareness activities.

# Conservation approach

## Community-based conservation:

- Conduct local stakeholder consultation/ workshops in all surrounding villages,
- Secure household conservation stewardship agreements and local village decrees to stop primate hunting,
- Participatory law enforcement: Establish & train community patrol groups for each village/commune,



# Conservation approach

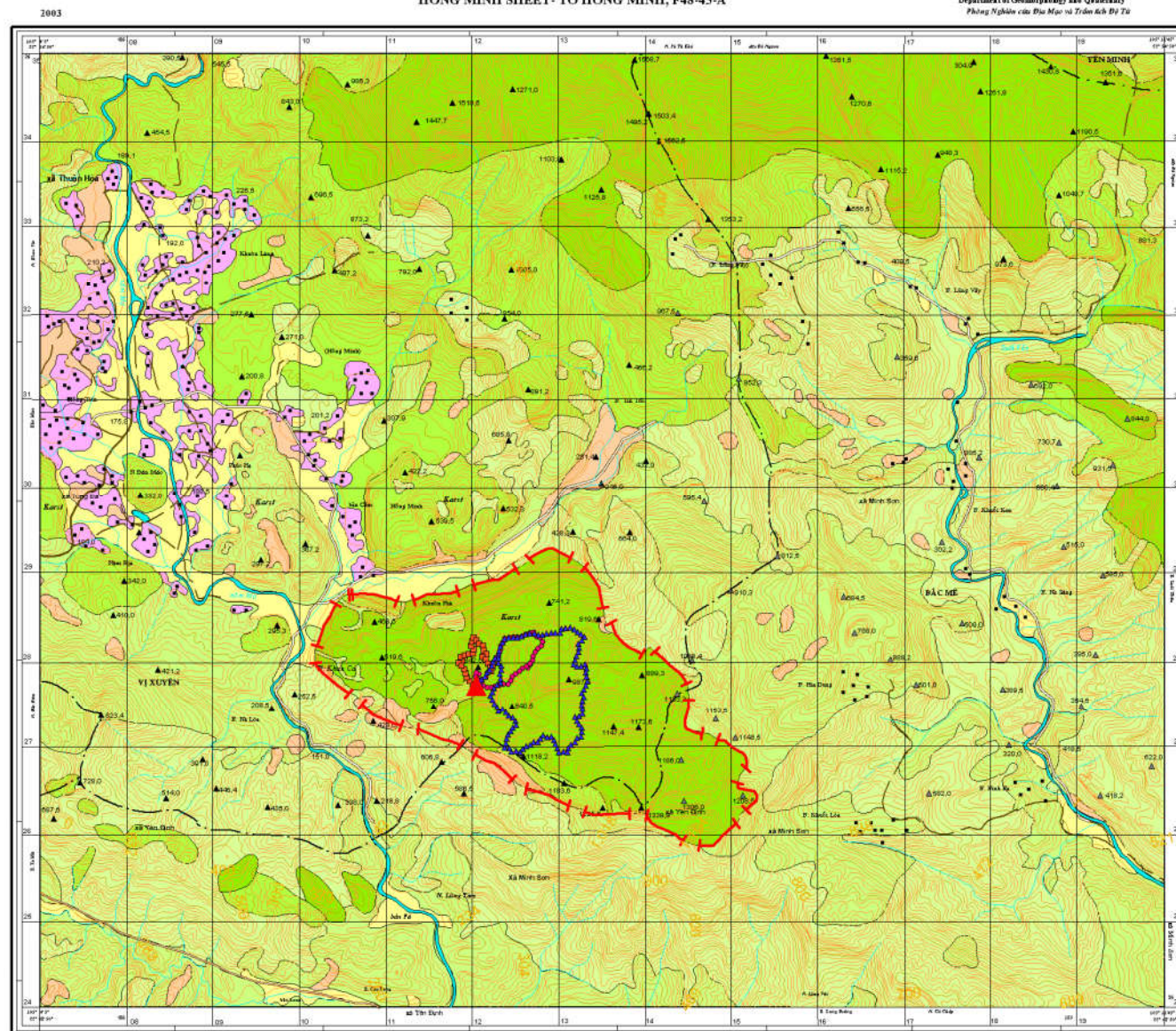
Community-based conservation (continuation):

- Participatory boundary delineation of strictly protected core zone



**TONKIN SNUB - NOSED MONKEY CONSERVATION AREA**  
**KHU VỰC BẢO TỒN VỌC MŨI HẾCH**  
**LAND USE MAP OF DU GIA - TÙNG BÀ COMMUNE, VỊ XUYỀN DISTRICT, HÀ GIANG PROVINCE**  
**BẢN ĐỒ SỬ DỤNG ĐẤT KHU VỰC DU GIÀ - XÃ TÙNG BÀ HUYỆN VỊ XUYỀN, TỈNH HÀ GIANG**  
**HONG MINH SHEET- TỜ HỒNG MINH, F48-43-A**

Department of Geomorphology and Quaternary  
 Phòng Nghiên cứu Địa Mạo và Triền Khố Bù Tu



**LEGEND**  
**CHÚ GIẢI**

**Land use classification**  
**Phân loại sử dụng đất**

- |   |  |
|---|--|
| Primary forest<br>Rừng nguyên sinh                  | Paddy field<br>Ruộng lúa                               |
| Degraded forest<br>Rừng đã bị tác động              | Upland field<br>Nương rẫy                              |
| Open forest (Tall shrub)<br>Rừng thưa (cây bụi cao) | Settlement and house garden<br>Đàn cư và vườn cây vườn |
| Low shrub/woodland fallow<br>Cây bụi thấp/bỏ hoang  | Lake<br>Hồ   |

**Other symbols**  
**Các ký hiệu khác**

- |                                      |  |
|--------------------------------------|--|
| Trail<br>Đường mòn                   | Tonkin Snub-nosed Monkey conservation area<br>Khu vực bảo vệ nghiêm ngặt Vọc |
| Road<br>Đường                        | Elevation point<br>Điểm độ cao   |
| Commune boundary<br>Ranh giới xã     | Centre point patrol routes<br>Điểm tâm các tuyến tuần tra                    |
| Contour<br>Đường địa hình            | Patrol route A<br>Tuyến tuần tra A   |
| River, stream<br>Sông, suối          | Patrol route B<br>Tuyến tuần tra B   |
| Individual households<br>Điểm dân cư | Patrol route C<br>Tuyến tuần tra C   |

Compiled by: Nguyễn Đại Trung, Phạm Việt Hà, Lê Mạnh Trí, Nguyễn Đình Tuấn  
 Ngã thành lập: Nguyễn Đại Trung, Phạm Việt Hà, Lê Mạnh Trí, Nguyễn Đình Tuấn

SCALE 1:25,000  
 0 km 10 km 20 km

Data sources: Aerial photos 2003  
 - Topographic map 1:50,000 Gauss projection 1995  
 - Census WGS 84  
 Nguồn tài liệu: ảnh chụp máy bay năm 2003  
 - Bản đồ địa hình Gauss năm 1995  
 - Lưới chiếu: WGS 84

Map number: 1  
 Bản vẽ số: 1



# Community-based conservation

Some responses to limitations & constraints of community-based conservation:

- Good supervision & leadership
- Striking the right balance between law enforcement and community participation (based on threat analysis)
- Voluntary resettlement following social standards





**Thank you for  
your attention**

